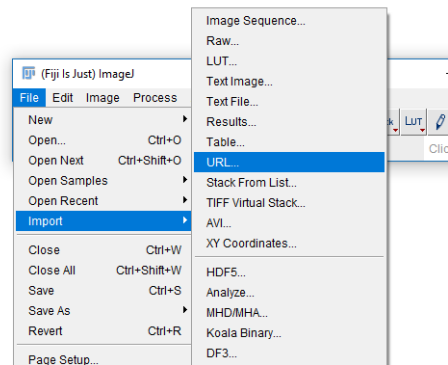


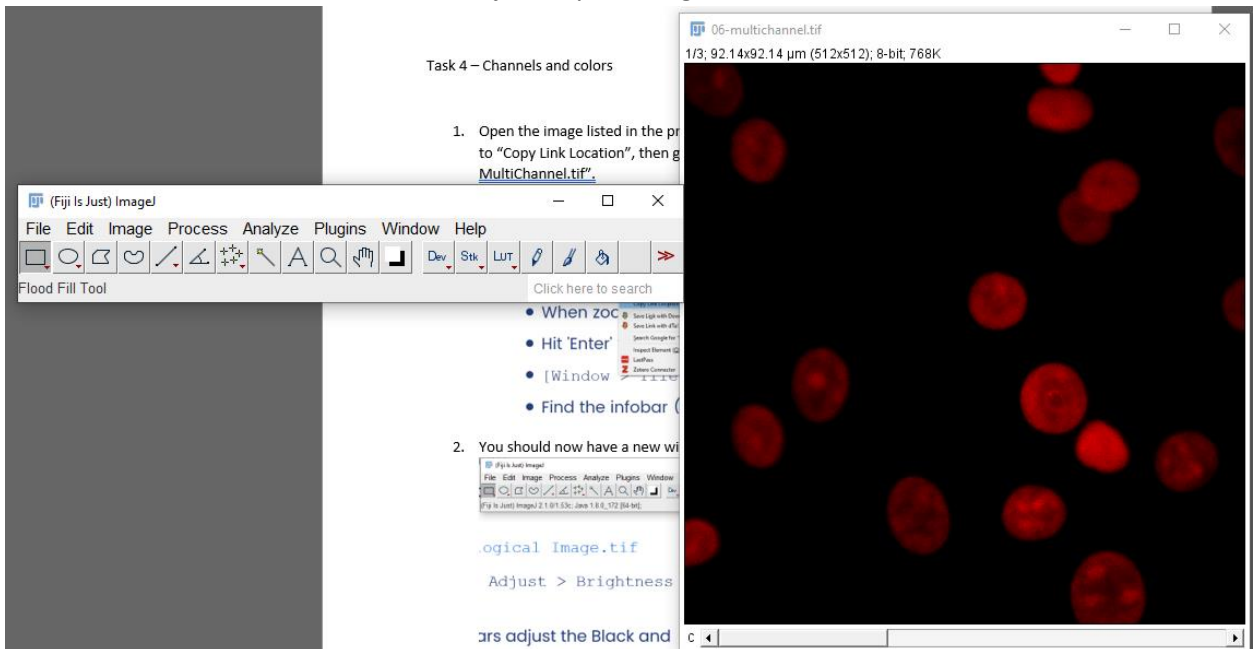
Task 5 – Lookup Tables

1. Open the image listed in the presentation. To do so, right-click the link on the presentation, go to “Copy Link Location”, then go to Import -> URL in Fiji. Do it for the image we will use: “06-MultiChannel.tif”.

1. Run Fiji (found in XXX)
 2. Open 01 - Photo.tif and 02 -
- Zoom using
 - When zooming
 - Hit 'Enter'
 - [Window
 - Find the infobar (below left) c

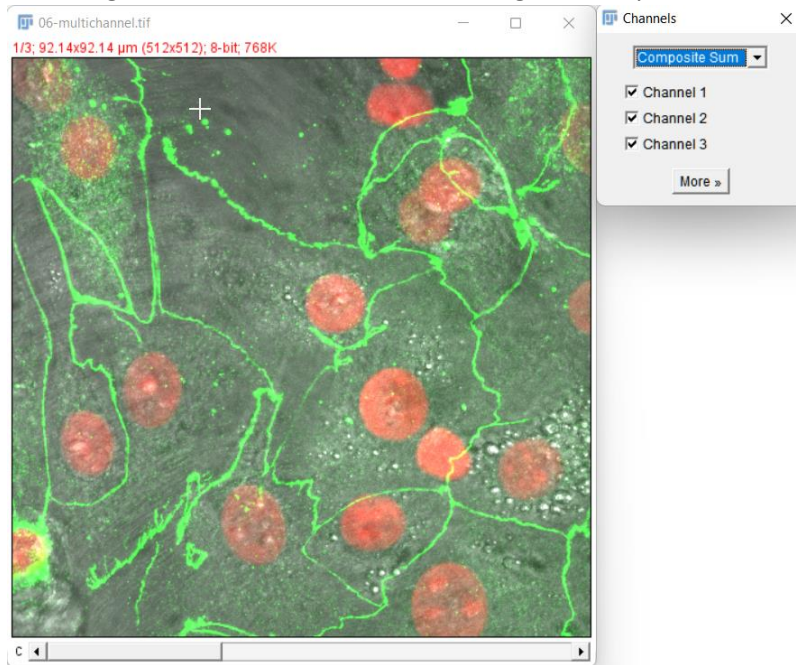


2. You should now have a new window in Fiji with your image.



3. If you end up with an image of a clown, you have not copied the link correctly in step 1!
4. Run Image -> Lookup Tables. Try a few different ones. Which ones work well for this data? When would you use “Grays”?

- Run Image -> Color -> Channels Tool. Change the dropdown to "Composite".



- Click "More". You can directly select new LUTs from here and see how they change the composite in real time. Which channel is having its LUT changed?
- Run Image -> Color -> Display LUTs to get a quick overview of the LUTs you have available. What do the bars mean? What uses can you think of for "glasbey", "HiLo" and "edges"?

